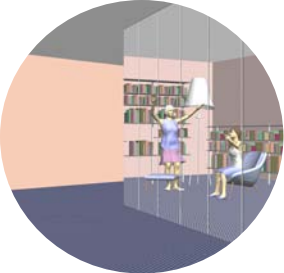


Contents

University of Illinois in Chicago
School of Architecture

Andreina Yopez
M. Arch Candidate 2019

ayepez4@uic.edu



WAYS OF LOOKING SPLIT
Fall semester 2016
Pages 6 - 13



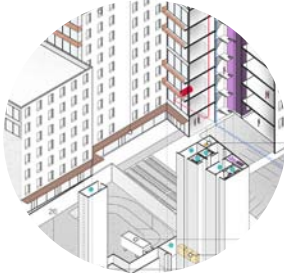
FLOATING ROLES
Fall semester 2016
Pages 14 - 17



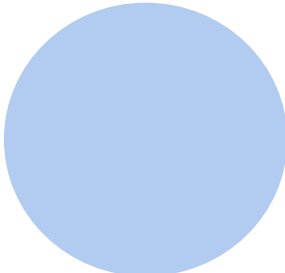
ARCADIA
Spring semester 2017
Pages 18 - 25



A HOUSE FOR HORIZONTAL LIVING
Fall semester 2017
Pages 26 - 33



439 N HALSTED.
Fall semester 2017
Pages 34 - 39



WAYS OF LOOKING SPLIT

1

The project is characterized by the concept of being 'split' where every part of it is informed by two complementary sides.

This is achieved by a series of parameters established to compose space in every view proposed. First, main space is always created by simple and opaque floating planes, in addition a reflective surface is placed in each view to give a double reading about the content.

In this way, space is divided into reflective and opaque surfaces where content operates different on both sides. The camera focal length and placement is changed in order to emphasize the free plan and fading surfaces.

Finally, the use of soft and fading pastel colors mediate the incorporation between both sides of space.



The concept for this project is based on ways of looking split, where the free plan is a key component to get a full reading of the space. Each view plays with the position of two floating planes whether one of them reflects and give us the information to read the whole room and the other one give us only a sense of opaque spacial conditions.

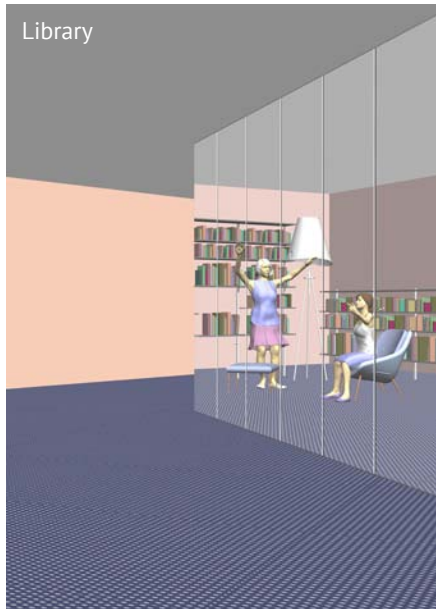
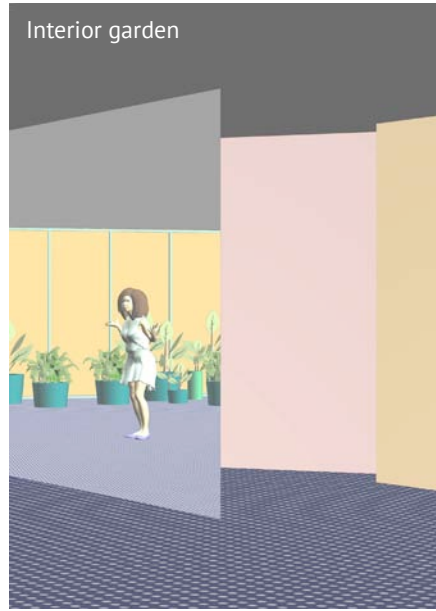
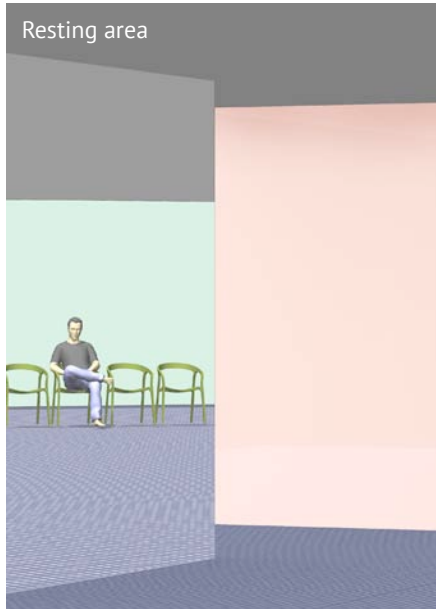


Figure studies

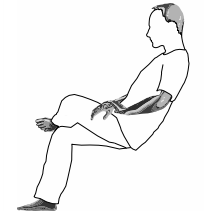
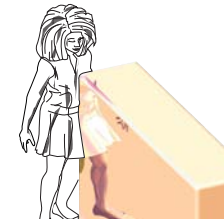


Figure + object studies



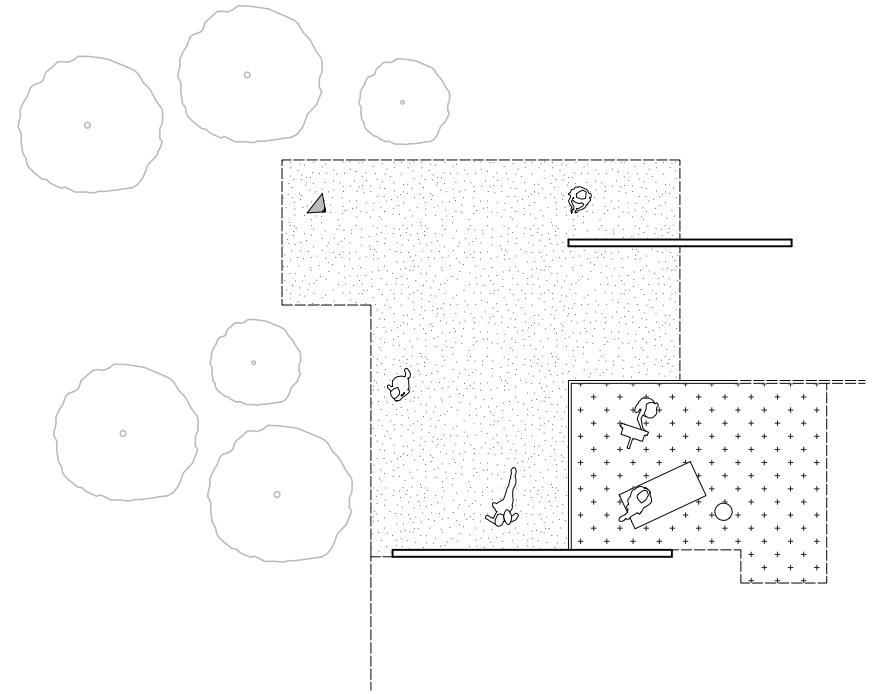
Space & color studies



Interior perspective reflecting an inside scene



Plan revealing perspective B



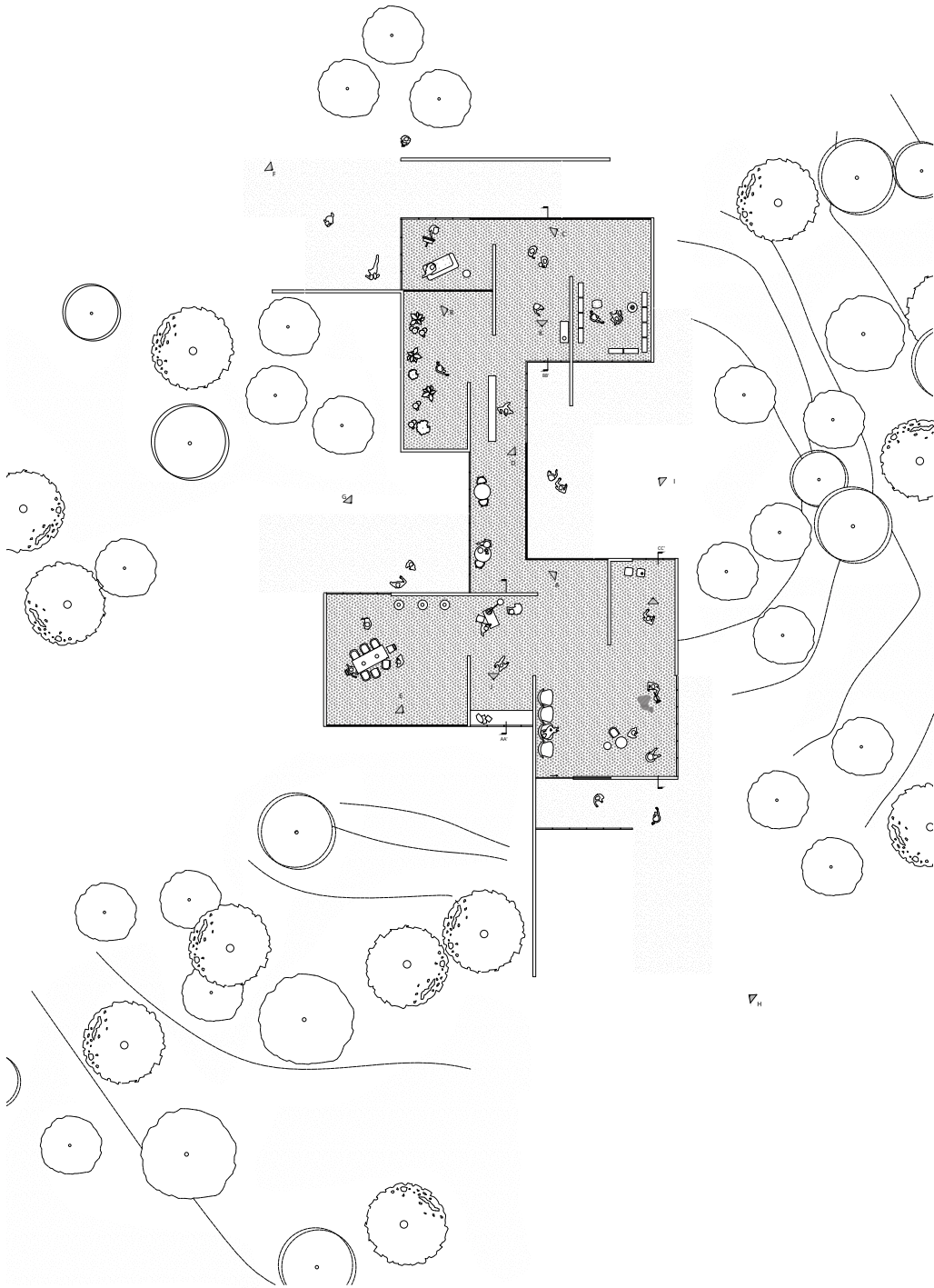
Exterior perspective A



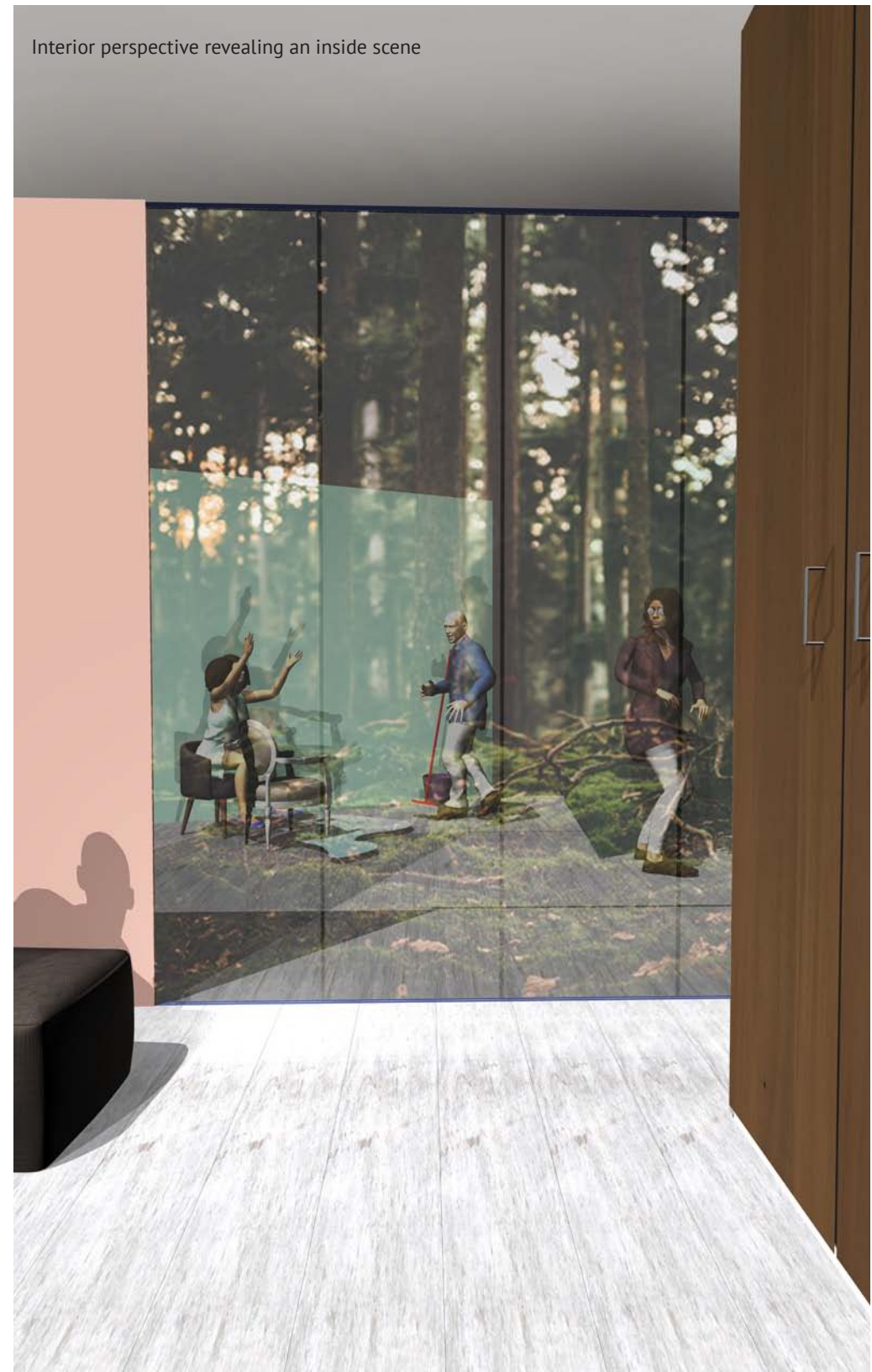
Exterior perspective B



Different views combined in global plan



Interior perspective revealing an inside scene



FLOATING ROLES

2

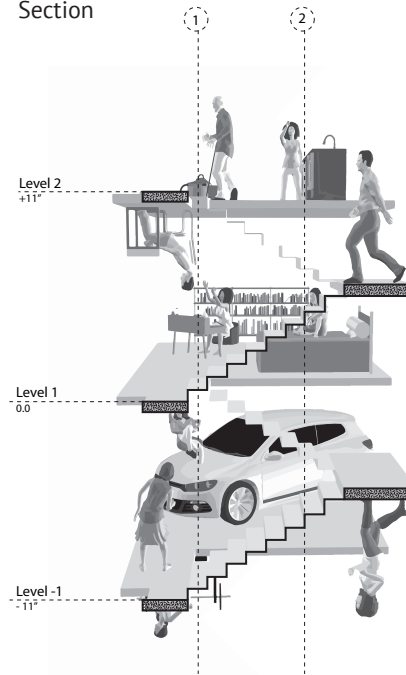
This project is created as a conclusion for an investigation of labor power in Chicago and specifically in the garment company. The power conveyed to women after this abuse of labor reflects the growth of women rights and their position in society. The floating house represent the result after the fight for equalitarian roles between genders in the world.





From a very simple prototype of two physical platforms connected by recto verso stairs, the open space provided by this floating house allows women to develop all the functions that the actual world count with them.

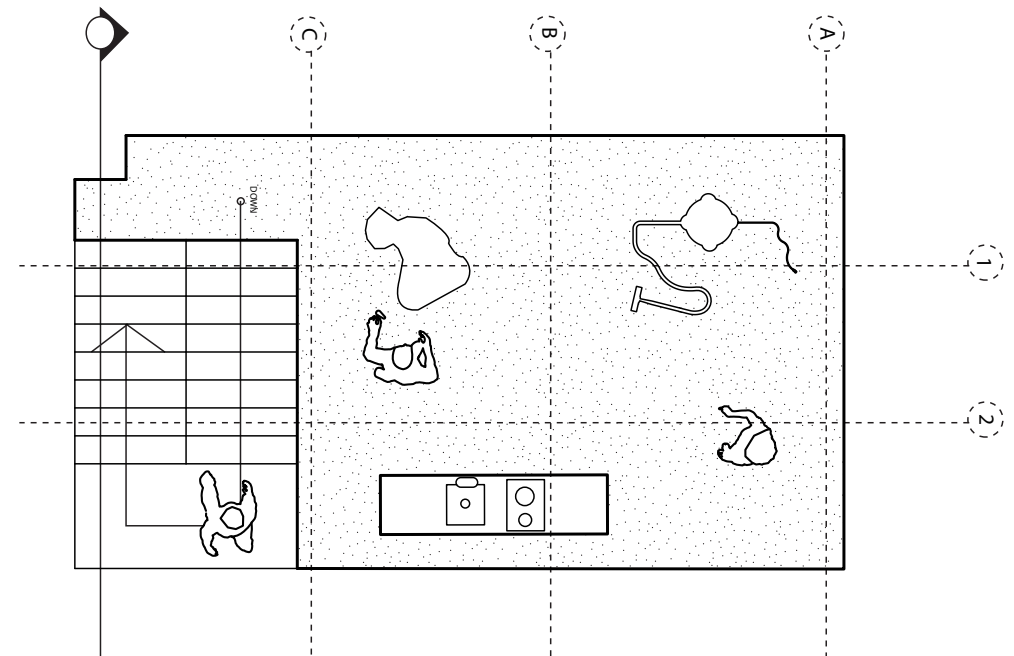
Section



The floating mass produced house provides useful spaces in all of its sides, there is no hierarchy within spaces and the floor has the same importance as the ceiling. This also represents the equality existing nowadays between male and female and how the stereotyped activities by gender are gone. In the floating house, domestic labor is not only done by women but know the roles are also embraced by men, social equivalence is portrayed with equalitarian and important jobs given to both genders where the importance of female labor is the same as men labor, what is more all stereotyped activities like doing hard work or hard lifting is nor only for men nor for women.

The equality in all spaces of the house reflects the huge progress done by female in the aim to being considered and important in society. This is how the female power run many aspects of the world and society and everything begins in their houses just by remembering the introduction of work into their responsibilities.

Second floor plan



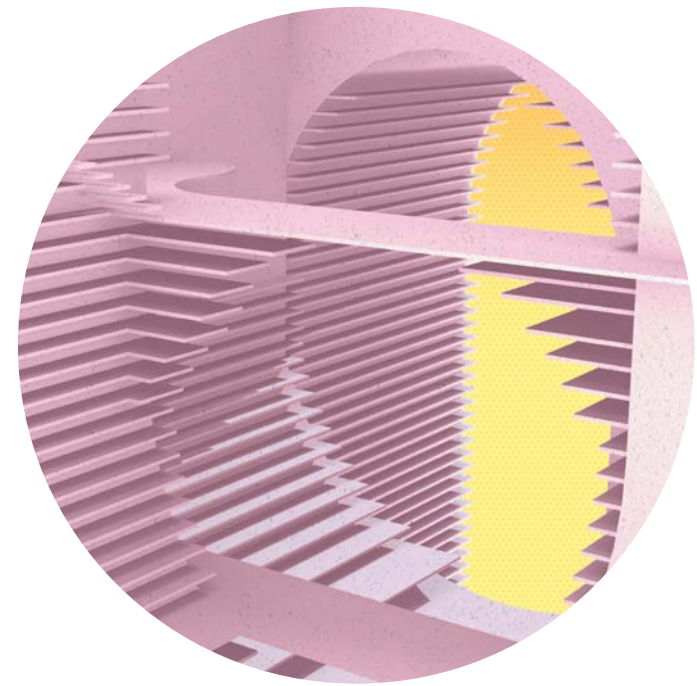
ARCADIA

3

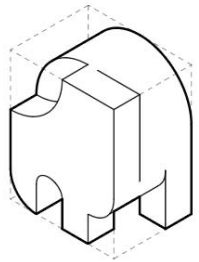
The library manages the relationship between vaulted spaces and oblique connections at the exterior and interior of the project.

The figural shape of the building has different conditions at the top and the bottom where the bottom is more fragmented and defined by compressed space with arch points going down, in this way the lower base responds to a street scale where only touches the ground in two accessing points.

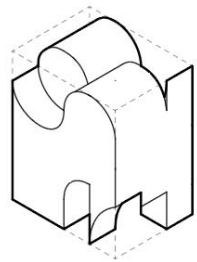
On the other hand, at the interior of the figure, spaces are connected through arches detaching from walls and bookshelves creating an integrated system. All inner spaces have a diagonal visual connection that allows people to have a glance across all rooms.



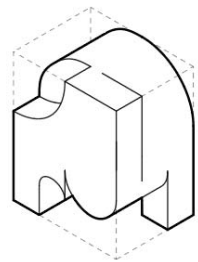
The project begins with the creation of different figures and analyzes the spatial advantages and disadvantages that each of them possesses. Names were given to the figures in order to define a concept and starting from this exploration, a final form was chosen that is developed until it reaches its final composition.



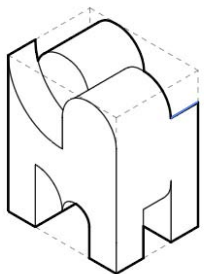
Sitting dog



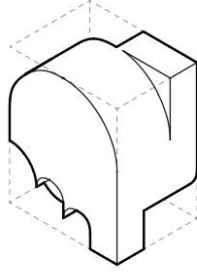
Upper waves



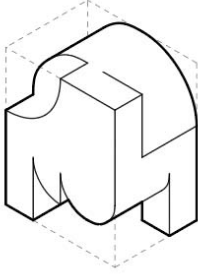
Two legs



Standing cat



Mountains & valleys



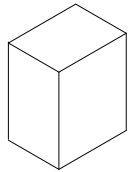
U shapes



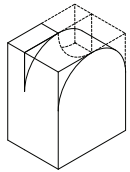
Selected figure to develop



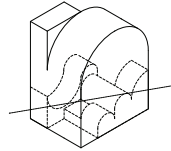
How - to - diagram



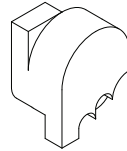
Solid cube



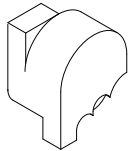
Upper cutouts



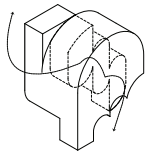
Diagonal connection



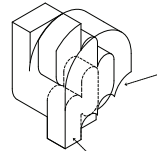
Final result



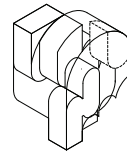
Exterior figure



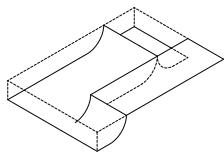
Connecting spine



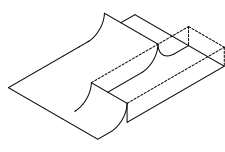
Connection with ground



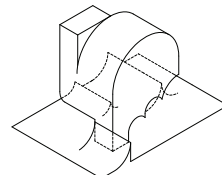
Secondary spaces



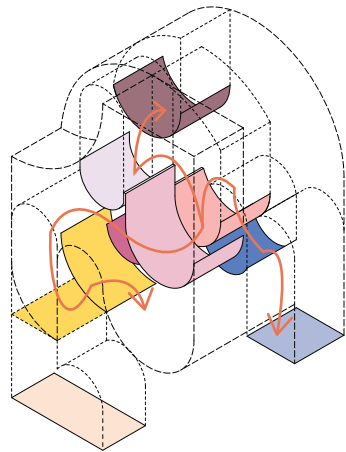
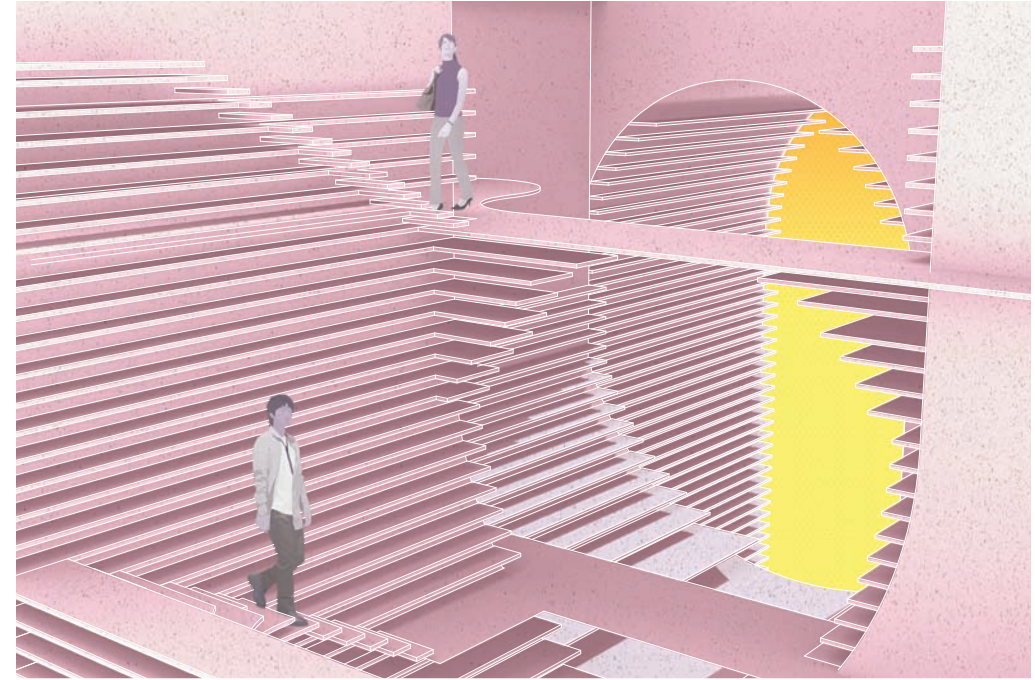
Waves insertion



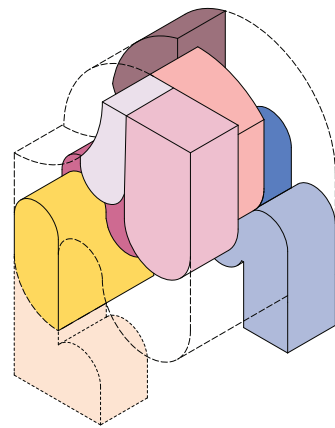
Rectangular cutout



Final



Circulation diagram



Program diagram

- Entrance + newspapers
- Lounge area
- Work area

- Exhibition
- Cafe
- Children center

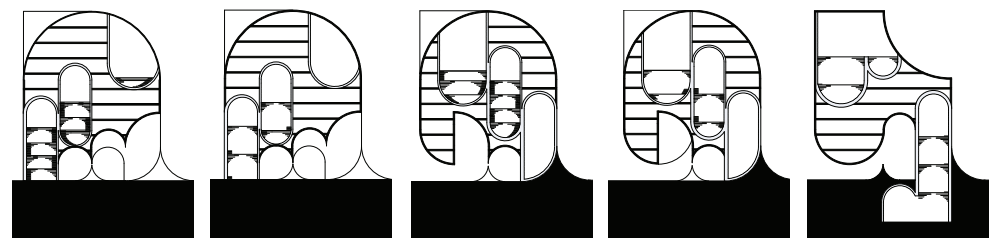
- Teen center
- Elderly center
- Auditorium



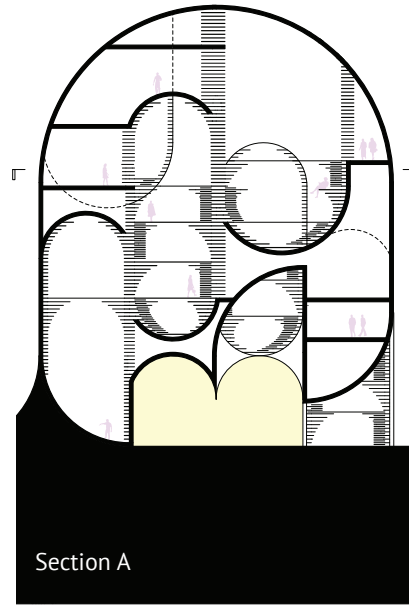
Diagrammatic plans



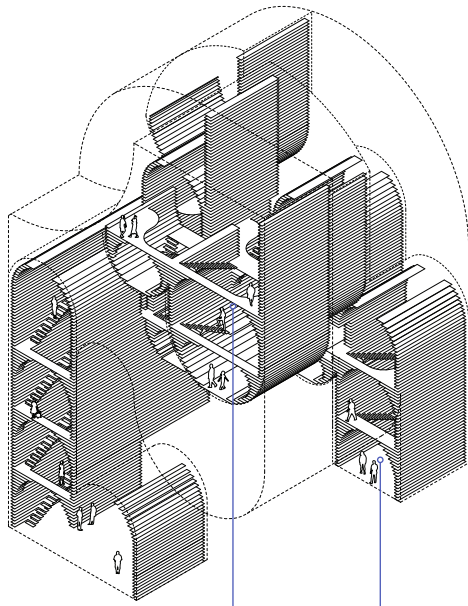
Diagrammatic sections



The library is structured inside by shelves and stairs that allows the vertical connection between spaces. The size of each arcade is related to the program it shelters.

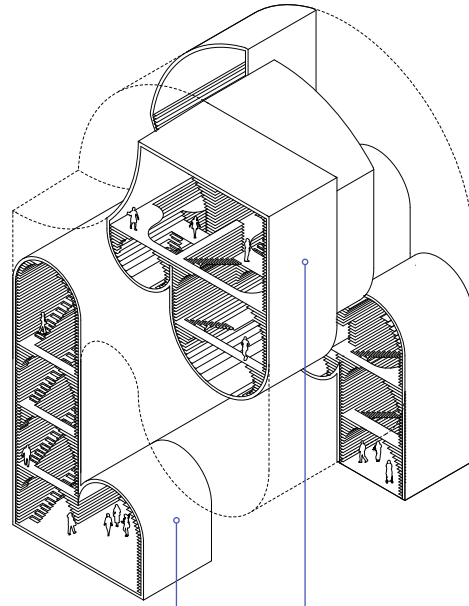


Stairs + shelves + public space



Bridges and arches connecting spaces
Entrance

Interior figure + public space



Underground condition
Interior envelope

Model



A HOUSE FOR HORIZONTAL LIVING 4

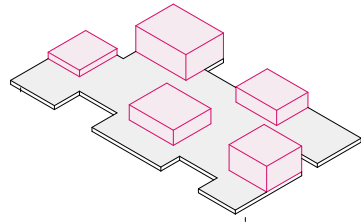
A house for horizontal living is a house where every domestic activity is paired with the use of a daybed. The proposal inquires the possibility of developing all the domestic functions from a comfortable position of the daybed, performing as centers of domestic control.

The lower level is colonized by a field of daybeds. The constant repetition of daybeds throughout the house define a domestic landscape of horizontal surfaces, that, depending on the object or furniture that is attached to it, define the specific function of the daybed : eating, working, cooking, resting.

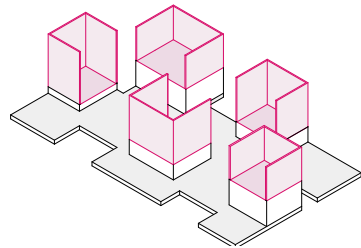
The domestic space of the owner is designed to be perceived from that horizontal position elevated two feet from the ground, a position of permanent relaxation and also visual control of the domestic activity of the renter.



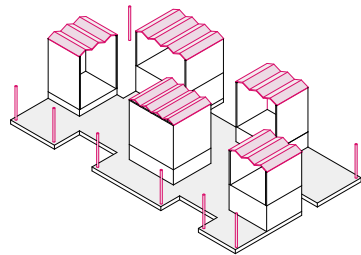
Ground floor storage = interior walls



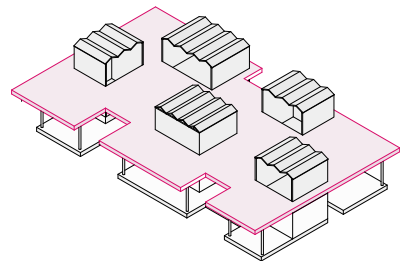
Storage areas = platforms for suspended rooms



Independent floating rooms vs open space ground floor

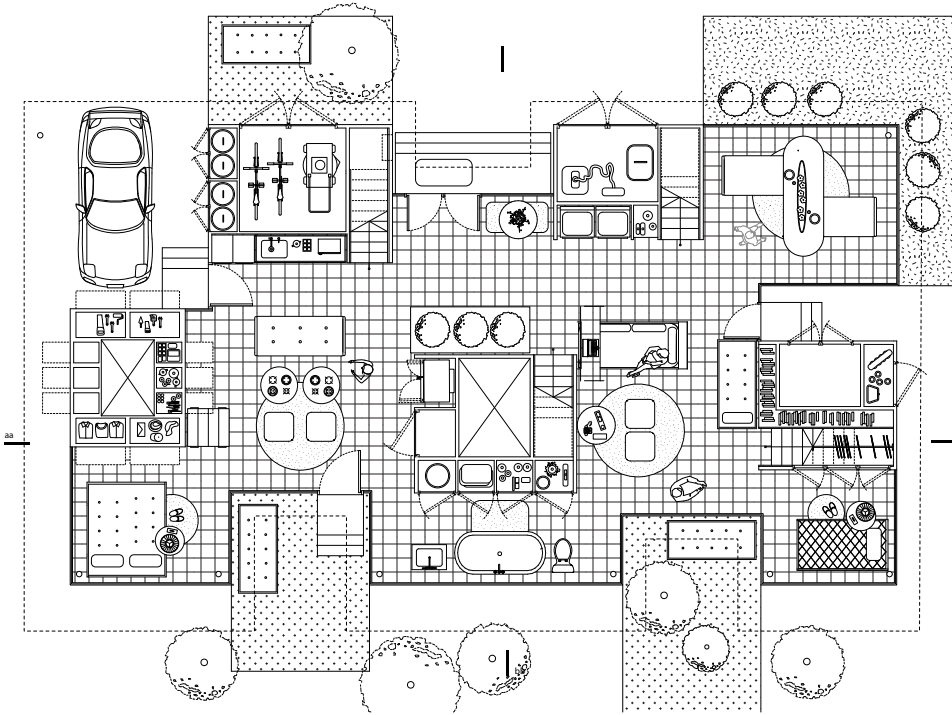


Final composition

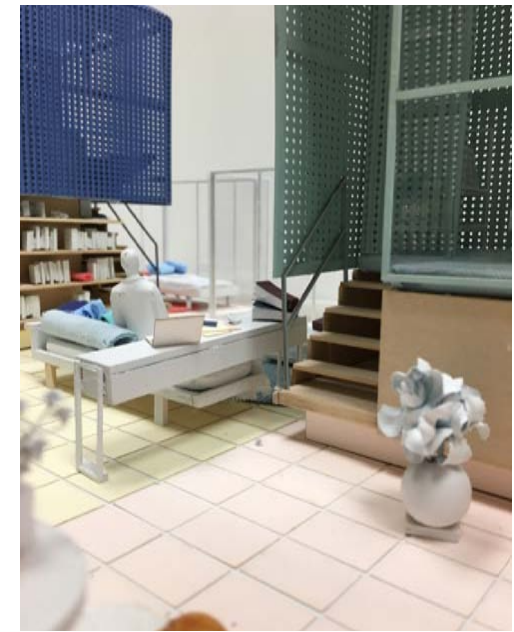
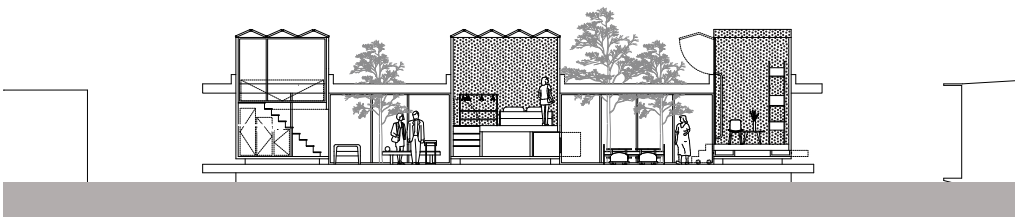


The domestic space of the renter, a family of three, is fragmented into five Suspended rooms. A collection of rooms that are specifically designed for one domestic activity. Each volume, a miniaturized version of a house, is elevated into platforms that varies in height and are the storage space for the owner.

Ground floor plan



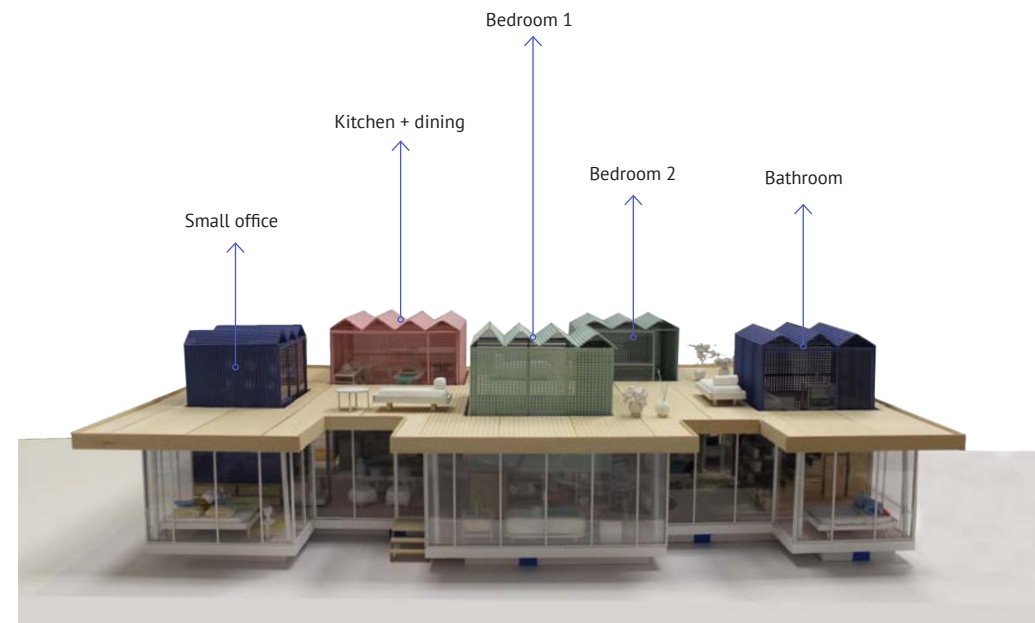
Longitudinal section AA'



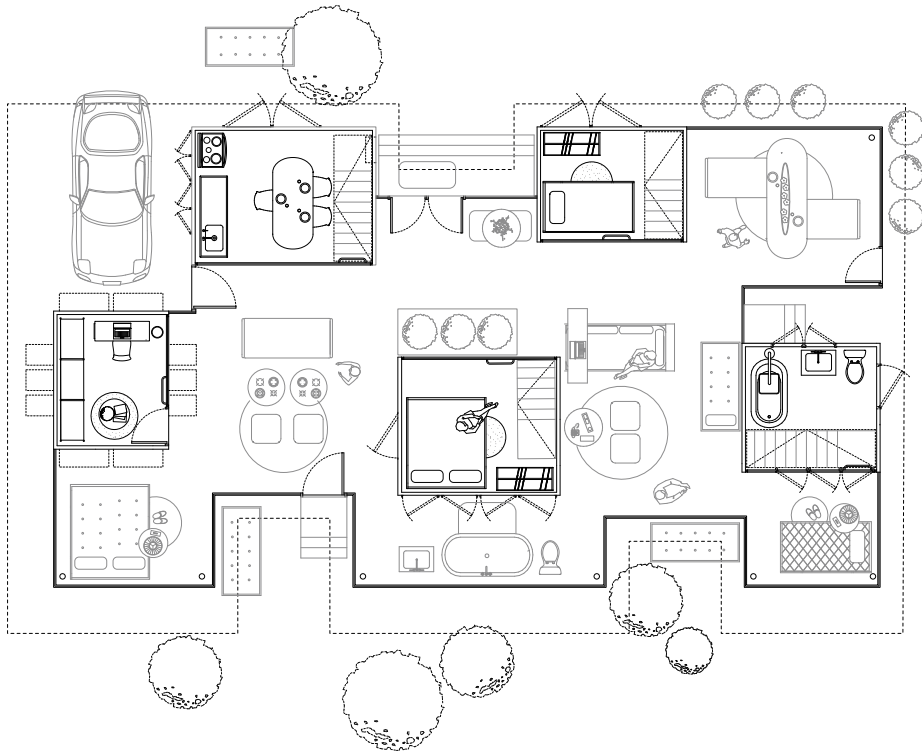
While the domestic space of the owner is very open and the only enclosure is transparent and translucent planes to emphasize the condition of infinite expansion, the space of the renter is fragmented, specific in function and enclosed into a defined volume.

The daybed landscape is also expanding from the house to the outside with a deck so the community and neighbors can use them.

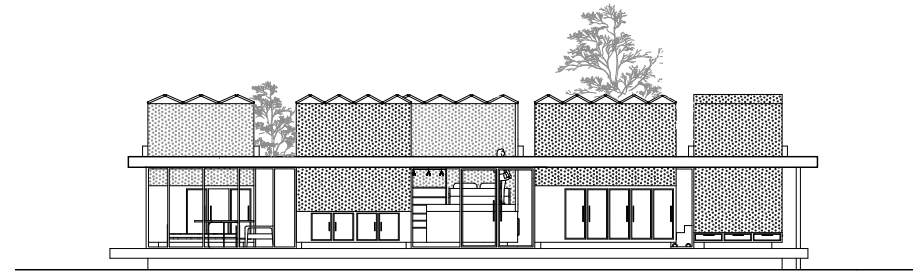
The roof is an habitable surface for the renter and can be also used as a secondary access for moving from one room to another without interacting with the owner of the house.



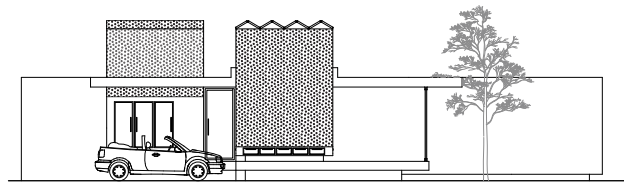
Second floor plan



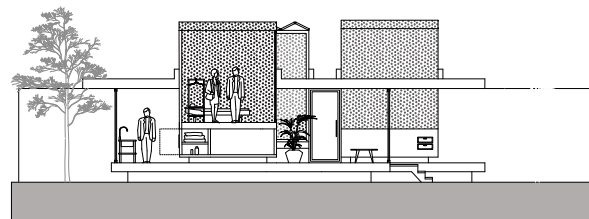
North Elevation



East Elevation



Section BB'

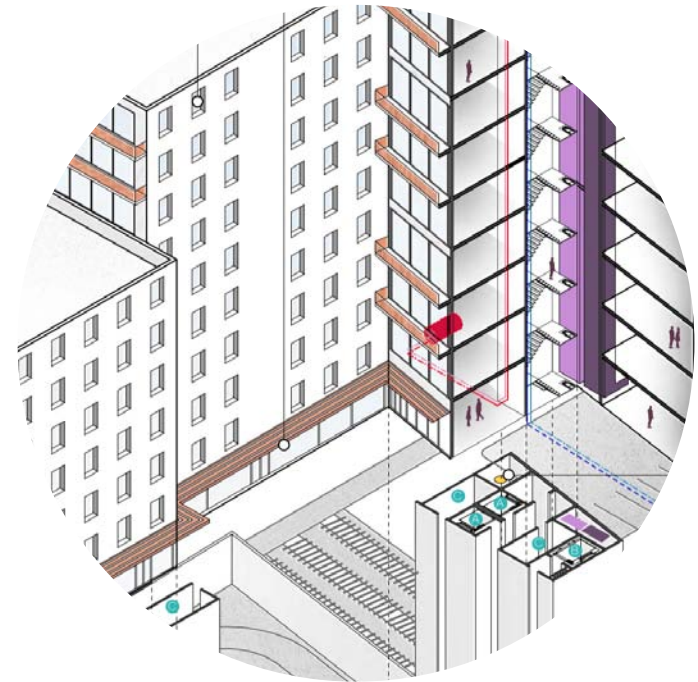


359. N HALSTED

5

The library manages the relationship between vaulted spaces and oblique connections at the exterior and interior of the project. The figural shape of the building has different conditions at the top and the bottom where the bottom is more fragmented and defined by compressed space with arch points going down, in this way the lower base responds to a street scale where only touches the ground in two accessing points.

On the other hand, at the interior of the figure, spaces are connected through arches detaching from walls and bookshelves creating an integrated system. All inner spaces have a diagonal visual connection that allows people to have a glance across all rooms.



Zoning specs

Zoning Description: Tall buildings, campuses, and other large developments that must be negotiated with city planners. Developers gain freedom in building design, but must work with city to ensure project serves and integrates with surrounding neighborhood.

Address: 359 N Halsted Street

Zoning: Planned Development (PD 643)

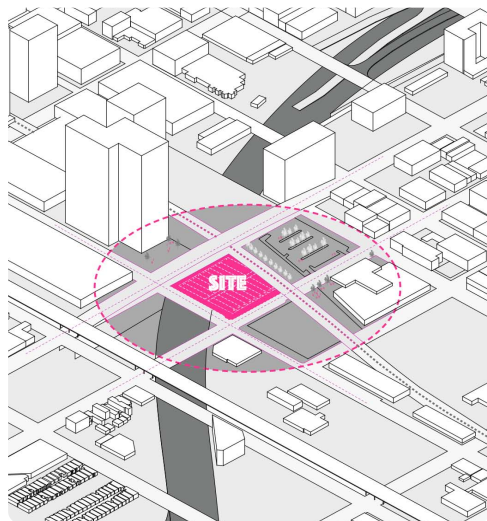
Area: 76230 Square foot, 1.75 Acres

FAR: 6.0

Lot Area/ Unit: Maximum Number of Dwellings Unit: 373 Units Setbacks: In Accordance with Site Plan

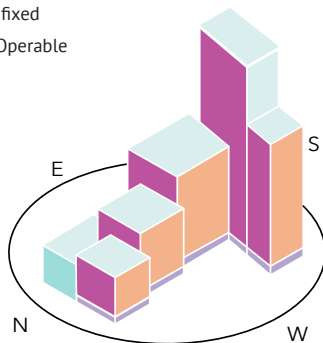
Uses: The following uses area permitted in the area delineated herein as a Planned Development: multi-unit residential, dwelling units located above the ground floor, accessory parking accessory uses.

Site Analysis

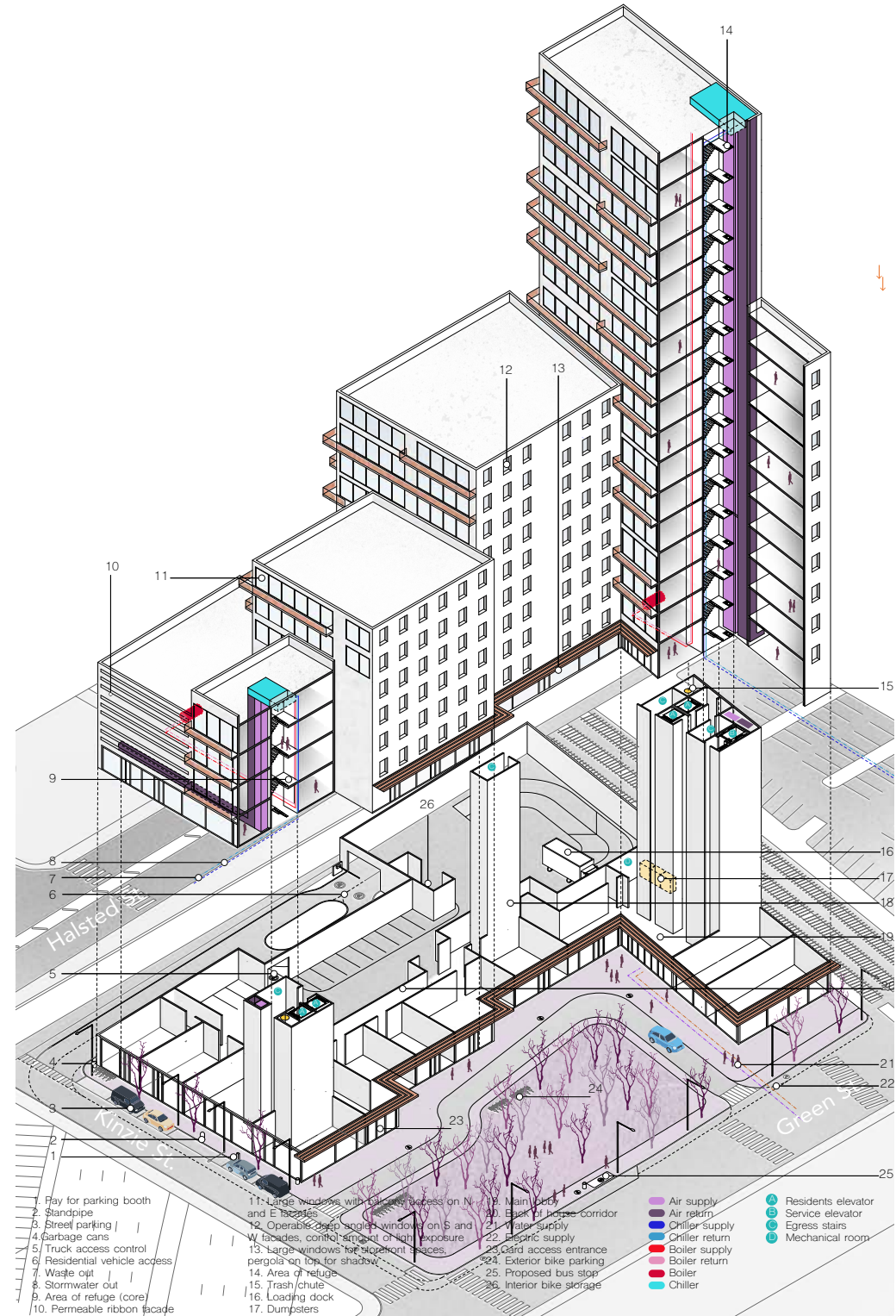
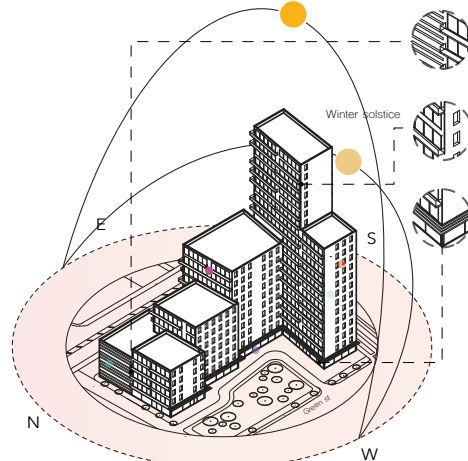


Surfaces

- Opaque
- Translucent fixed
- Translucent operable
- Transparent fixed
- Transpered Operable

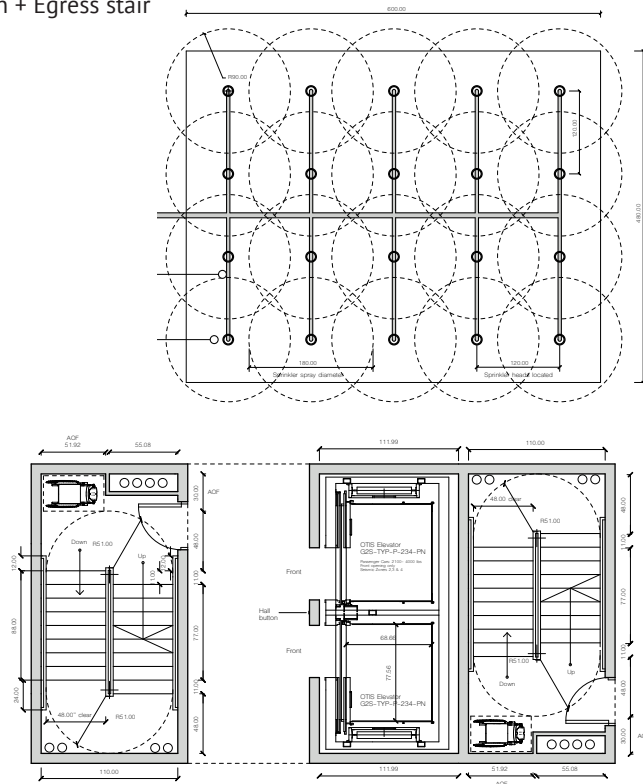


Summer solstice

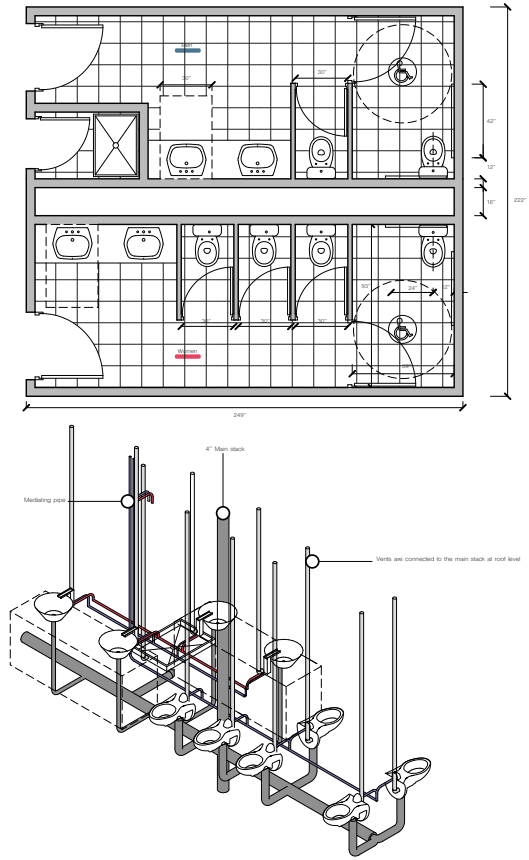


- 1. Pay for parking booth
- 2. Sandpipe
- 3. Street parking
- 4. Garbage cans
- 5. Truck access control
- 6. Residential vehicle access
- 7. Waste opt
- 8. Stormwater out
- 9. Area of refuge (core)
- 10. Permeable ribbon facade
- 11. Large windows with balcony access on N and E facades
- 12. Operable operable supply window on S and W facades, control of high exposure
- 13. Large windows for street front spaces
- 14. Area of refuge
- 15. Trash chute
- 16. Loading dock
- 17. Dumpsters
- 18. Main lobby
- 19. Back fit horse corridor
- 20. Fire supply
- 21. Electric supply
- 22. Electric supply
- 23. Card access entrance
- 24. Exterior bike parking
- 25. Proposed bus stop
- 26. Interior bike storage
- Air supply
- Air return
- Chiller supply
- Chiller return
- Boiler supply
- Boiler return
- Boiler
- Chiller
- Residents elevator
- Service elevator
- Egress stairs
- Mechanical room

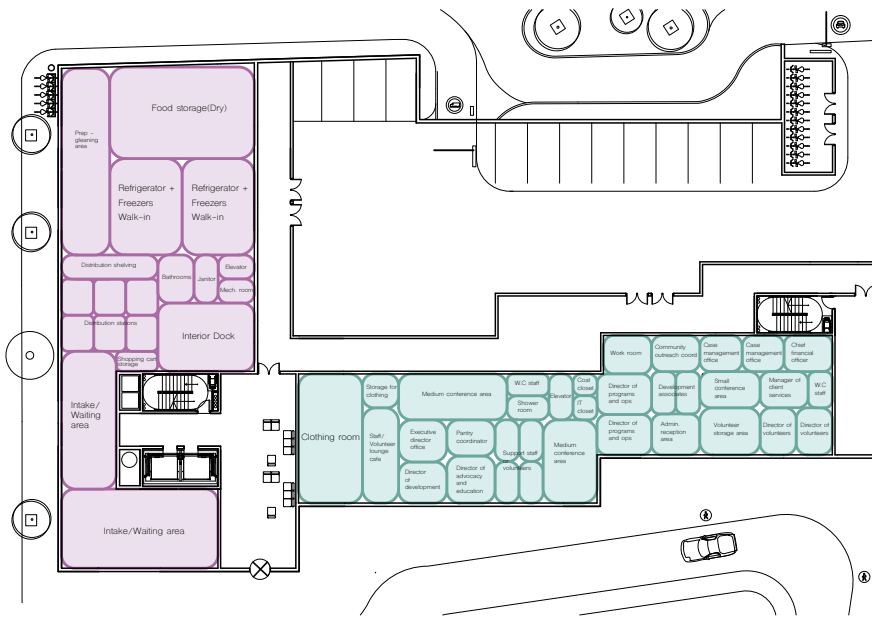
Sprinkler plan + Egress stair



Restrooms + plumbing system



Program fit



Electrical plan

